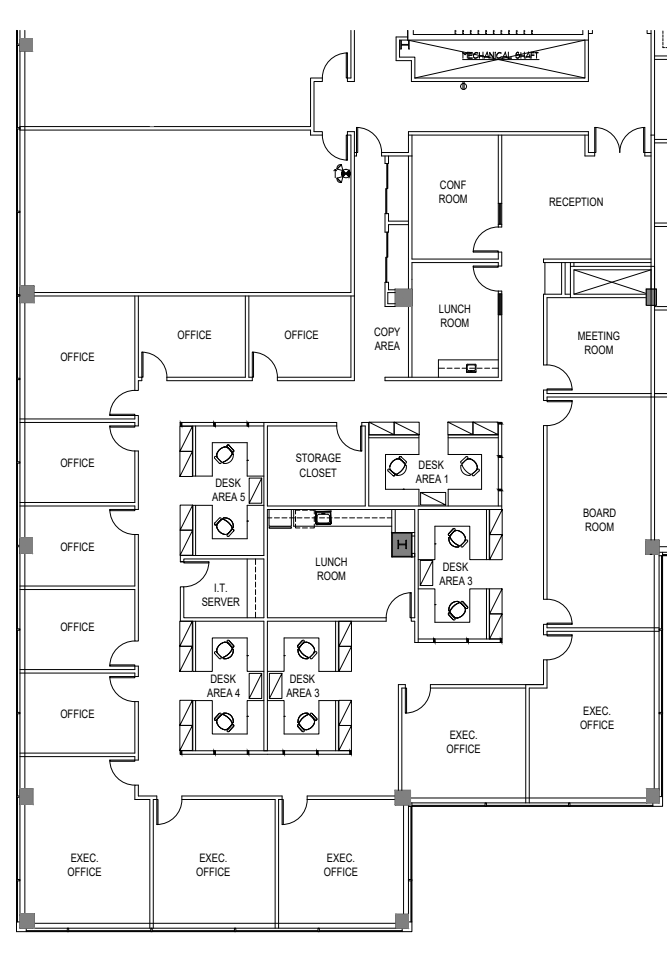
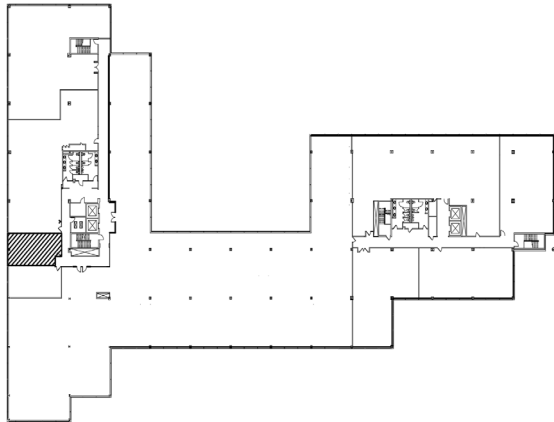


# Court Plaza South

3rd Floor // 7,892 RSF

21 Main Street  
Hackensack, NJ 07601



Scan the QR Code For More Information or Visit: [www.sanzari.com/courtplaza](http://www.sanzari.com/courtplaza)

## CONTACT:

Jonathan Kristofich  
201.488.5800 ext. 103  
jkristofich@naihanson.com

Andrew Somple, SIOR  
201.488.5800 ext. 151  
asomple@naihanson.com

Jessica Curry  
201.488.5800 ext. 199  
jcurry@naihanson.com

**NAI** James E. Hanson  
COMMERCIAL REAL ESTATE SERVICES, WORLDWIDE

**ALFRED**  
**SANZARI** SINCE 1945  
ENTERPRISES

FOLLOW US!      | NJ Offices: Teterboro | Parsippany | [naihanson.com](http://naihanson.com) | Member of NAI Global with 300 Offices Worldwide

THE INFORMATION CONTAINED HEREIN HAS BEEN OBTAINED FROM SOURCES CONSIDERED TO BE RELIABLE, BUT NO GUARANTEE OF ITS ACCURACY IS MADE BY NAI JAMES E. HANSON.