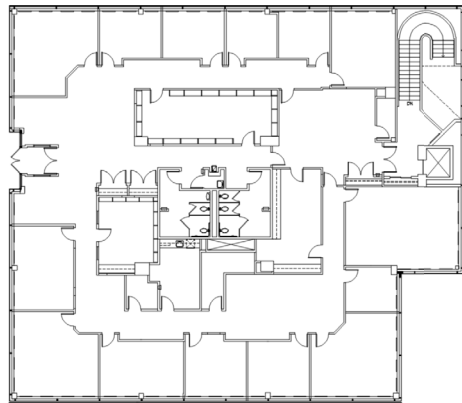
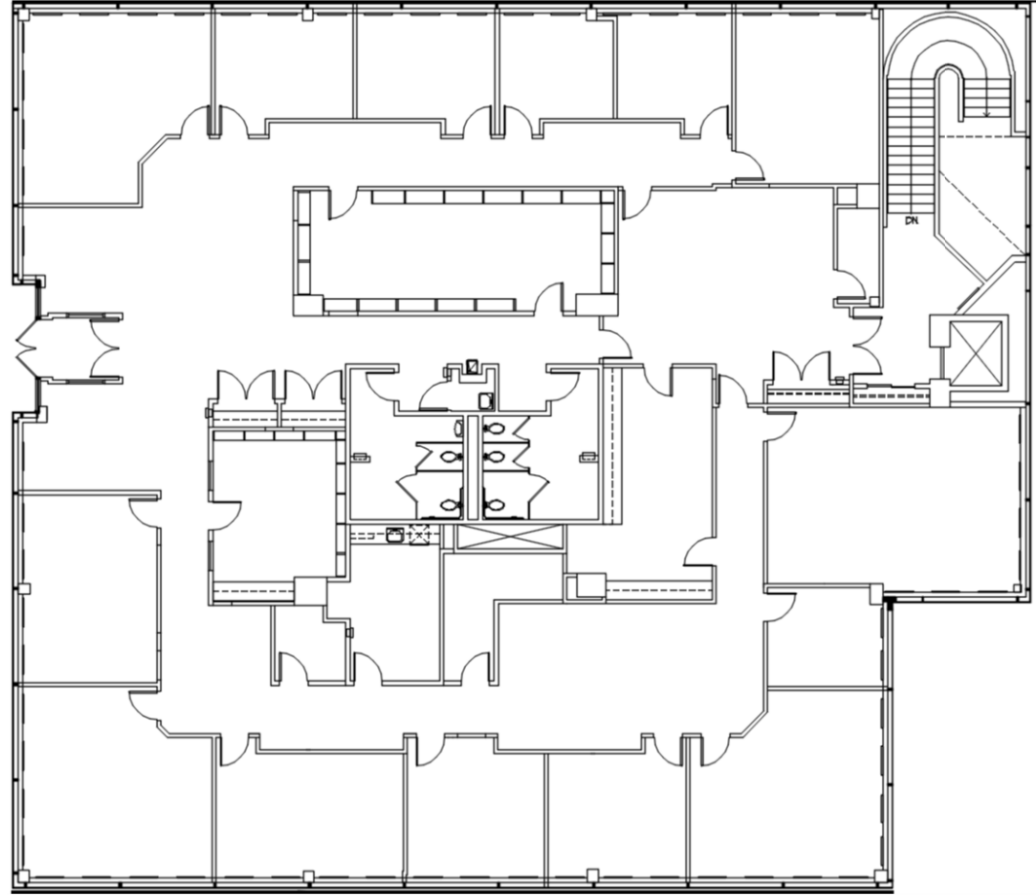


Court Plaza East

Full Building // 10,926 RSF

19 Main Street
Hackensack, NJ 07601



Scan the QR Code For More Information or Visit: www.sanzari.com/commercial/court-plaza

CONTACT:

Jonathan Kristofich
201 488 5800 ext. 103
jkristofich@naihanson.com

Andrew Somple, SIOR
201 488 5800 ext. 151
asomple@naihanson.com

Jessica Curry
201 488 5800 ext. 199
jcurry@naihanson.com

NAI James E. Hanson
COMMERCIAL REAL ESTATE SERVICES, WORLDWIDE

ALFRED
SANZARI SINCE 1945
ENTERPRISES

FOLLOW US!      | NJ Offices: Teterboro | Parsippany | naihanson.com | Member of NAI Global with 325+ Offices Worldwide

SERVICES OFFERED

Brokerage • Property Management • Corporate Services • Financing • Logistics • Government Services • Healthcare • Tenant Representation • Cold Storage • Investment Services

The information contained herein has been obtained from sources considered to be reliable, but no guarantee of its accuracy is made by NAI James E. Hanson